



The Saddle Light Center for Therapeutic Horsemanship

November 2021

Official Newsletter for Saddle Light Riders, Volunteers & Supporters

The Saddle Light Center for Therapeutic Horsemanship

17530 Old Evans Road
Selma TX 78154
(210) 651-9574

fax: (210) 651-3495

slcdirector@sbcglobal.net
www.thesaddlelightcenter.com

Kerstin L. Fosdick

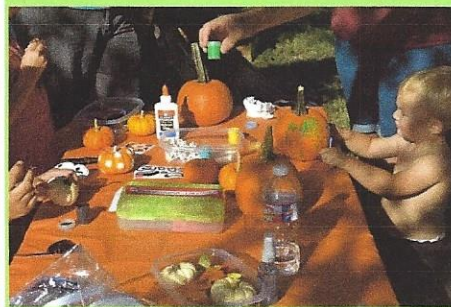
Executive Director
Licensed Physical Therapist
PATH Int. Registered Therapist in
Hippotherapy
PATH International
Certified Therapeutic
Riding Instructor

The Saddle Light Center is a non-profit corporation created in 1991 to help disabled people reach their full potential.

Our mission is to provide equestrian therapy for children, teenagers and adults with neurological, orthopedic, learning, emotional or other disabilities.

Our goal is to inspire our riders to accomplishments previously considered beyond their capabilities.

Thanks to everyone who came out to support us at 2021 Equestfest located at the beautiful Helotes Fairgrounds! We were able to work with a number of unique local vendors; Two Tons of Steel was fantastic as always —thanks to everyone who participated!



As you do your Christmas shopping, don't forget you can support us by shopping with **Amazon Smile!** Just go to <https://smile.amazon.com/> and select Saddle Light Center Inc. and a portion of the proceeds will go to support our programs.



What's Going on Around the Barn?



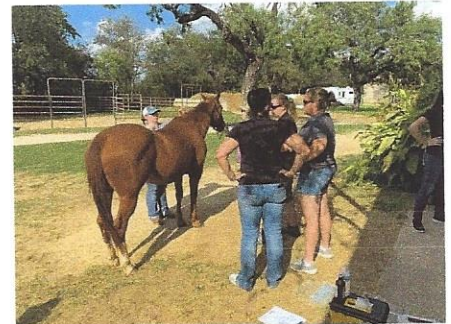
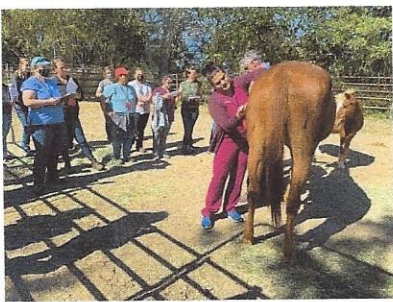
We were so sorry to hear that our former rider and volunteer, **Michaela Kathleen Wright**, passed away in September. Michaela was a beautiful young lady inside and out who loved to ride Native—hopefully they have met again. Please keep her family in your prayers.



Congrats to instructor **Marina Smith** on the birth of her daughter, Madison Emilia! She was born on Nov. 20th weighing 6 lbs 11oz and 19.5 inches long. Both mom and baby girl are healthy and doing well!



The **International Veterinary Acupuncture Society (IVAS)** returned again to utilize our horse partners for their acupuncture certification from October 18th through October 23rd. These participants were all licensed veterinarians; this is a very interesting scenario and volunteers had a chance to ask questions of the veterinarians, and see some of the effects of the treatment. In addition to treating our horses they also made a generous donation to SLC. It's always a rewarding experience for humans and equines alike when they come!



Mark your calendars for **Giving Tuesday 2021 on November 30th!** This year we are trying to raise \$2,600 to replace the Western gel saddle pads that we use in our lessons; these pads are excellent at protecting the horses' backs but at ten years old ours are in desperate need of replacement!

On Saturday, September 4th from 10-1 pm a group of 11 from **UTSA Student Psychology Association** spent a very busy morning painting Beau and Bunny's metal gates; they cleaned and re-arranged the wheel barrow storage room and brushed down the mounting ramp and then water treated it. Looks like new! Lots of work, lots of sweat, and lots of heat—thank you guys!



PIMA Medical Institute will be returning to use our horses for instructions of future Veterinary Technicians on Friday, December 3, 10 and Thursday December 16, 9-12 under the tutelage of Thomas Easley, DVM, Veterinary Program Director of PIMA

An update about the Christmas Party—The San Antonio Women’s Club where we have typically held our party could not offer a non profit rate this year and their regular rate is out of our range. We hoped to rent **Morgan’s Wonderland’s** Event Center but it is booked (but we will have it next year)—however we are still able to go and have a great time! We will have our party there on December 11th from 4pm to 9pm. There will be rides, a light display, pictures with Santa, hot chocolate and cookies! SLC will pay for tickets for our riders and 2 adults to attend with them. All other attendees must purchase their own tickets for \$10/ person through our website. Please RSVP asap so we get an accurate ticket count —you can call the office at 210-651-9574 or email slcdirector@sbcglobal.net.



A group from **Central Catholic High School** came out on Saturday October 16th. They filled Beau and Bunny’s stalls with calichi and tapped it level. This is seriously hard work but it really needed to be done! We thank them so much for their efforts!



Recent Grants and Donations:

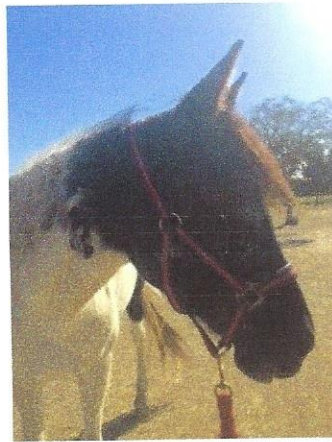
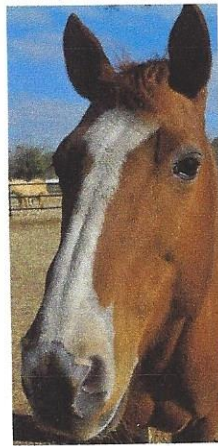
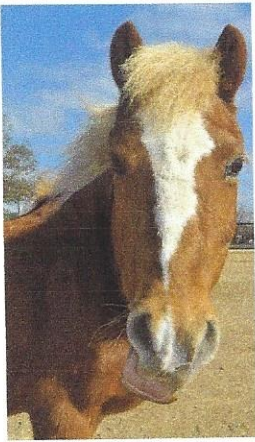
- In September SLC received \$3,565 in donations through **the Big Give!** This will help pay for a financial audit that will allow us to apply for more grants.
- In August **Alamo Caravan #269** presented us with their annual donation of \$750
- **SAAF** granted us \$15,000 this year and an additional \$15,000 next year for operating expenses.
- \$5,000 from the **Gordon Hartman Family Foundation** for program expenses
- \$1,000 from the **Equus Foundation** for horse expenses
- We raised \$14,783 at **EquestFest!** **Valero** was one of the event sponsors



In September, the **Saddle Light Center** celebrated its **30th year in business!** The success and longevity of the program is due to the hard work and commitment of countless employees, volunteers and especially Kerstin’s dedication to SLC and the riders! Many generations of horses have made a huge difference in the lives of so many riders in the past 3 decades. This holiday season as we celebrate 30 years we are especially grateful

Thank You

for the individuals and organizations who have helped us achieve this milestone—here’s to many more!



We're looking for dedicated and committed volunteers for a not so ordinary volunteer opportunity!

...working with the Saddle Light horses and the children who benefit from equestrian therapy!

We need over 120 volunteers each week to provide chores such as rider assistance by spotting, sidewalking, or horse leading, and horse care and barn chores. We also have opportunities for groups that want to fulfill a specific service project (great for church groups, college clubs, work teams and more).

Volunteer hours are from 3 pm to 9 pm Monday through Friday. Most volunteers sign up for either a 3:00 to 6:00 shift or 6:00 to 9:00. We also need volunteers to assist with barn chores on Saturday and Sunday mornings and afternoons. Contact us for more info—(210) 651-9574 or volcoor@sbcglobal.net.

No experience necessary! We will teach you what you need to know.



The Saddle Light Center
for Therapeutic Horsemanship
17530 Old Evans Rd.
San Antonio, TX 78154

**Free Matter
for the Blind
&
Disabled**